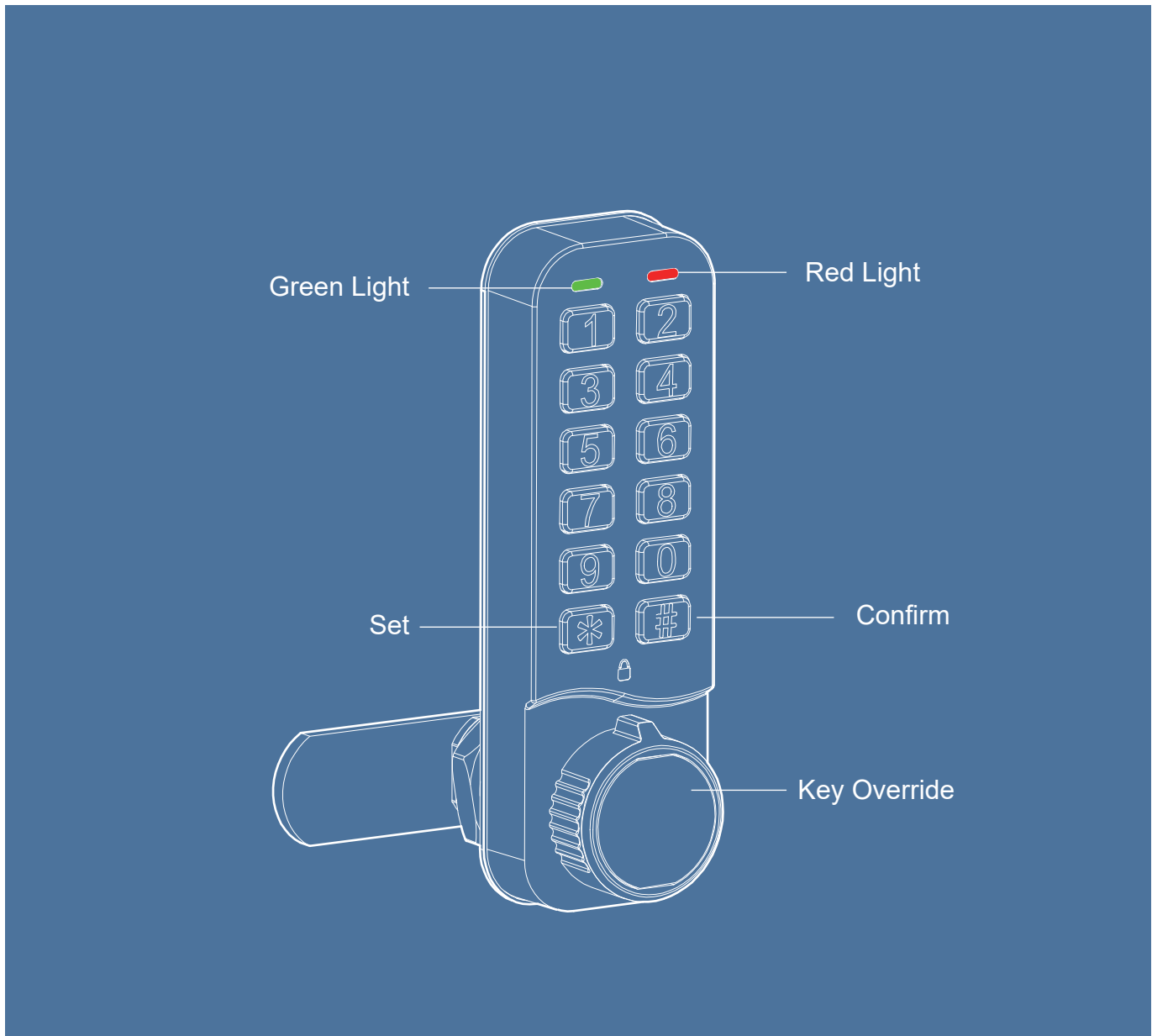




# "VIC" ELECTRONIC KEYPAD LOCK

## Operating Instructions



Code right: Green light will flash 2 times

Code wrong: Red light will flash 3 times

Occupied: In public mode: Green light will flash on every 6 seconds. (Enter the code to lock, the green LED light flashes at intervals, indicating the lock or cabinet is in an occupied state).

Succeed: Green light will flash 2 times, "beep"

Fail: Red light will flash 3 times

Low voltage: Red light will flash 3 times with "beep" alarm inform user to replace the battery, it could still allow to unlock for 100 openings.

**Note:** Operate each button within 4 seconds or the current operation need to restart.

## Mode Operation

### Mode Setting

<p>Private Mode</p>	<p>Set: * --8 digit master code--#--07--# (Succeed: Green light will flash 2 times, "beep -")</p>
<p>Public Mode</p>	<p>Set: * --8 digit master code--#--06--# (Succeed: Green light will flash 2 times, "beep -") User code is one time valid, lock will keep open status until next user enter 4 digit code</p>

**Note:**

Factory settings:

1. Private mode
2. User code: 1111
3. Master code: 20050330(8 digit), Sub-master code(8 digit), Technician code(6 digit) are without setting
4. Auto-timed function is off

## Private Mode

### 1. Master Code Function

Function	Operation	Note
Open	8 digit master code	Re-lock automatically after 3 seconds
Set the master code	* --master code--#--01--# --new master code--#--master code--#	
Set the user code	* --master code--#--02--#--4 digit new user code--#	
Delete user code	* --master code--#--03--#	
Set or change sub-master code	* --master code--#--04--# --8 digit new sub-master code--#	
Delete sub-master code	* --master code--#--05--#	
Set public mode	* --master code--#--06--#	

### 2. Sub-master Code Function

Function	Operation	Note
Open	8 digit master code	Re-lock automatically after 3 seconds
Set user code	* --sub-master code--#--02--#--4 digit new user code--#	
Set sub-master code	* --sub-master code--#--04--#--new sub-master code--#	

### 3. User Code Function

Function	Operation	Note
Open	4 digit user code	Re-lock automatically after 3 seconds
Set user code	* --user code--#--new user code--#	

## Public Mode

### 1. Master Code Function

Function	Operation	Note
Open	8 digit master code	User code will be erased if open by master code
Set the master code	*--master code--#--01--#--new master code--# --new master code--#	
Set or change sub-master code	*--master code--#--04--#--new sub-master code--#	
Delete sub-master code	*--master code--#--05--#	
Set private mode	*--master code--#--07--#	
Set technician code	*--master code--#--08--#--6 digit new technician code--#	
Delete technician code	*--master code--#--09--#	
<b>Step 1</b> Set auto-timed unlock on (Default setting 12h)	*--master code--#--10--#--XX--#	Works only if <b>Step 1</b> has been made. 1. [XX] Optional: 02,04,06,08,10,12 For example: 12 means 12 hours, the lock will open automatically after 12 hours. 2. The time start to calculate when it is locked. 3. The auto time function will restart if it is open.
<b>Step 2</b> Change 12h Default setting f/ auto unlock	*--master code--#--11--#	
Set auto-timed unlock off	*--master code--#--12--#	
Set occupy light on	*--master code--#--13--#	
Set occupy light off	*--master code--#--14--#	

### 2. Sub-master Code Function

Function	Operation	Note
Open	8 digit sub-master code	User code is erased
Set sub-master code	*--sub-master code--#--04--# --new sub-master code--#	Re-lock automatically after 3 seconds

### 3. User Code Function

Function	Operation	Note
Open	4 digit user code	User code is erased
Set user code(Close lock)	4 digit code	Re-lock automatically after 3 seconds

## Public Mode

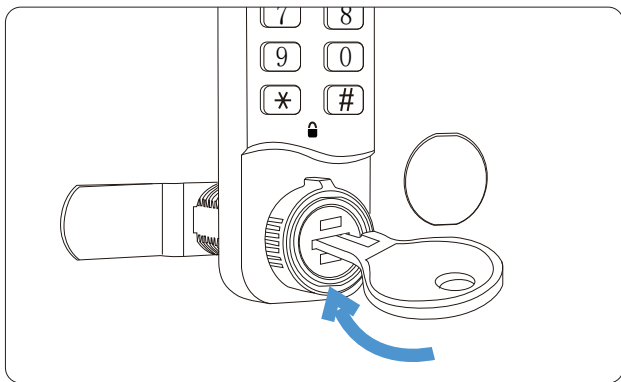
### 1. Technician Code Functions

Function	Operation	Note
Open	6 digit technician code	User code won't be erased

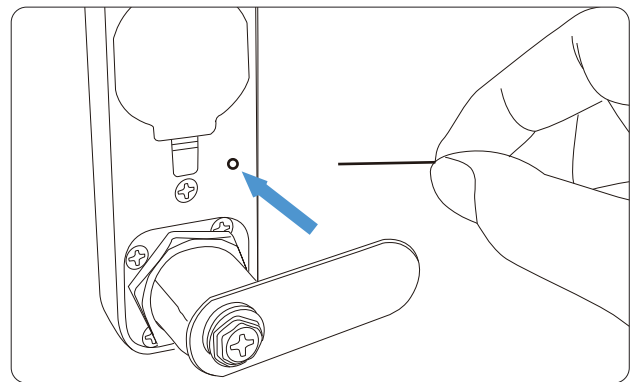
## Other Operations

1. Penalty time:  
Enter five incorrect codes will cause the lock shut down for 1 min.
2. Emergency opening:  
Open the protective cover, insert the mechanical key to emergency opening, the lock code still keep the previous setting(pic 1).
3. Initialize function

Function	Operation	Note
Initialize function	*--99--#--press back button	Enter the operation and press the reset button on the back of lock(pic 2) with 8 seconds, green light flash with "beep" alarm, locks go back to factory settings.



**pic1**



**pic2**